

# Switch Dx<sup>3</sup> (Digital Device Discovery)



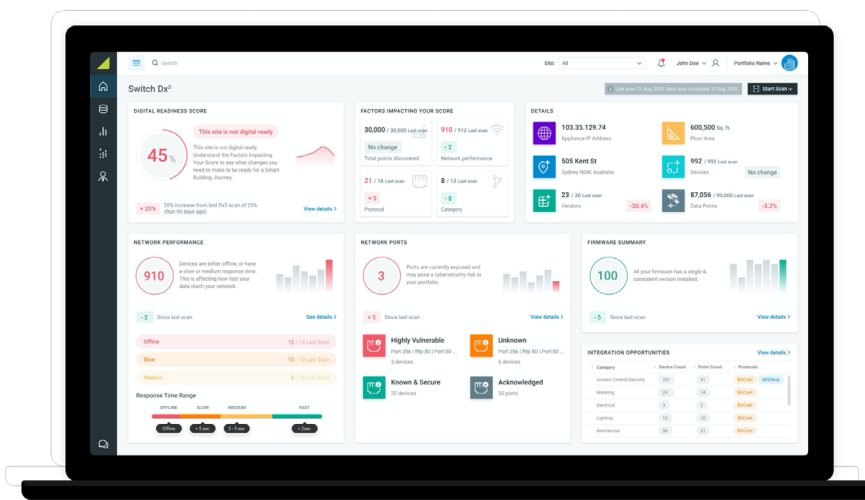
Is operational transformation part of your facility improvement strategy? Can you access the data from all building systems and provide real-time monitoring and management?

Deploying [Switch Dx<sup>3</sup>](#) on your building network is the first step in your organization's operational transformation to a smart building. Gain insight into what factors are keeping you from leveraging an open, flexible building operating system.

Once Switch Dx<sup>3</sup> is connected, a scan collects data and delivers the information to plan your smart building transformation:

- **Digital Readiness Score** – Discover your BACnet, Modbus and IP connected equipment and available data points, necessary for an open, integrated architecture.
- **Network Performance** – Find latency issues that impact data quality and interoperability. Benchmark and trend over time to discover failures or changes to any device.
- **Network Ports** – Identify potential cybersecurity vulnerabilities and impacts to data flow.
- **Firmware Summary** – Capture every devices' manufacturer, equipment type, the number of devices, firmware versions and available data points with every scan.

## Switch Dx<sup>3</sup> User Interface



## Switch Dx<sup>3</sup> has multiple uses:

- A site assessment of existing buildings prior to renovation provides information for better design, vendor selection and cost.
- Verify speed and latency issues that impact engineering time, device interoperability and connectivity.
- Trend devices' network connectivity and determine poor performance and potential security threats.
- An as-built commissioning tool for new buildings and renovations to determine if implementation meets your requirements.
- Establish a comparative baseline and prioritize smart building projects across your portfolio.
- Unify connected building information for IT and OT team.
- Utilize as a repository for collection of multiple building data, standardized and tagged to your specifications.

Reach out to Patti Mason at (720) 739-1335 or [pmason@switchautomation.com](mailto:pmason@switchautomation.com) to learn more about how Switch Dx<sup>3</sup> streamlines device connectivity, identifies potential cybersecurity issues and assesses network health to determine smart building readiness.