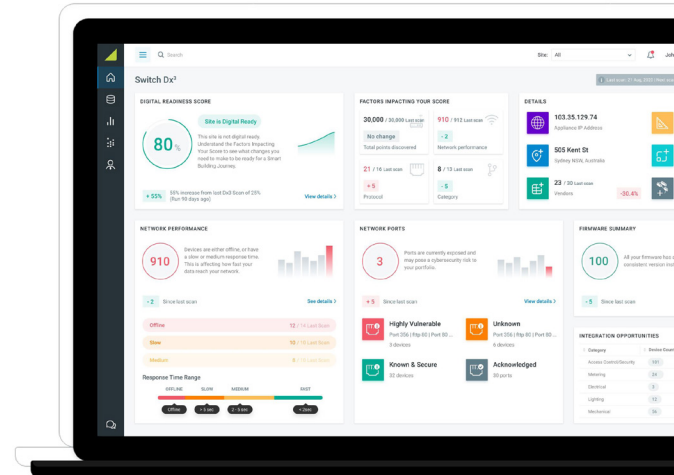


# Switch Dx<sup>3</sup> (Digital Device Discovery)

**An on-demand audit of your building network, devices and systems.**

Switch Dx<sup>3</sup> connects your building's systems to assess and report on data connectivity, network integrity and overall digital readiness.

Discover how your devices are performing on your building network with the Switch Dx<sup>3</sup> dashboard, which identifies potential security vulnerabilities and latency issues that impact interoperability and data flow. Your unique Digital Readiness Score benchmarks the amount of preparation required for a fully integrated and operational smart building at different times.



Feature	What do you get?	Why you need it
Switch IoT appliance	An IoT appliance with Switch Dx <sup>3</sup> 's smart building software, for any building size or type.	Connect and push data points to Switch Dx <sup>3</sup> to assess your existing building management infrastructure, verify your open specifications and security requirements have been met.
Switch Dx <sup>3</sup> dashboard	A detailed report of all BACnet, Modbus and IP-connected devices including point count, firmware version, port assignment and more.	Verify speed and latency issues that impact engineering time, device interoperability and connectivity. Trend devices' network connectivity and determine poor performance and potential security threats that impact your ability to ensure an efficient and healthy building.
Smart building program development	Further integration with the Switch Platform provides a repository for building data ready for operational use.	Expand your use of the Switch Platform to normalize and tag data, apply analytic rules, receive alerts, administer control, and manage utilities. Integrate further with APIs for an open, integrated building management architecture.

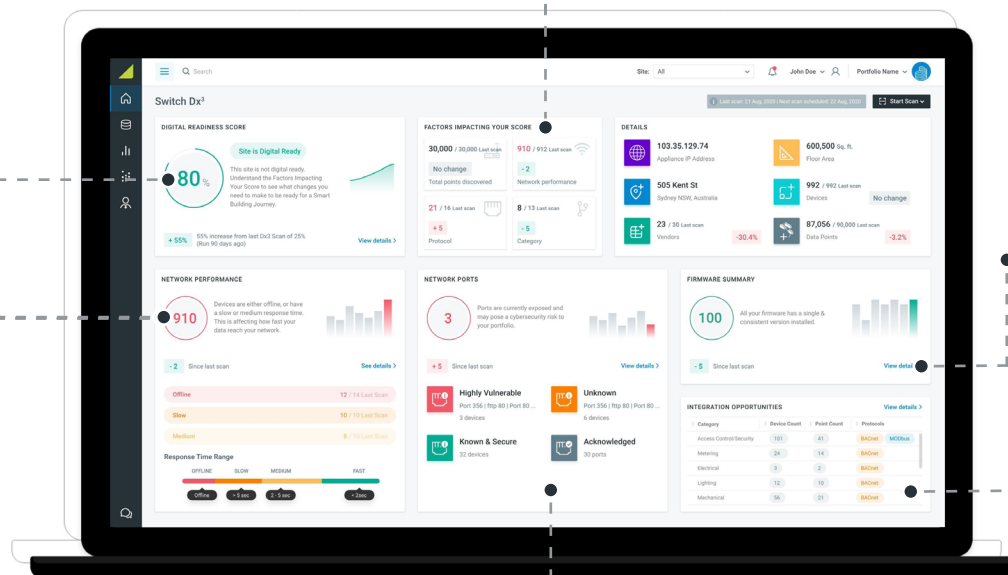
# Your building network connectivity dashboard

Each building network scan provides a range of important insights into your connected devices and the integrity of your network.

Your comprehensive **Digital Readiness Score** summarizes the integrity of each sites' building network with an overall percentage.

- The score is determined by the speed of connected devices, exposed device ports, firmware consistency and more.

**Factors Impacting Your Score** provides insight into how your connected building systems and devices have changed. These findings enable users to improve network connectivity and communications to increase the volume of opportunities for fault detection and beyond.



**Drill down on each tile** for detailed information on device manufacturer, device type, point count, communication port and much more.

**Network Performance** identifies how many devices are offline or responding slowly. Speed and latency issues impact engineering time, device interoperability and connectivity.

**Integration Opportunities** summarizes the number of devices and points by category and protocol, demonstrating the data and integration potential for an open, smart building.

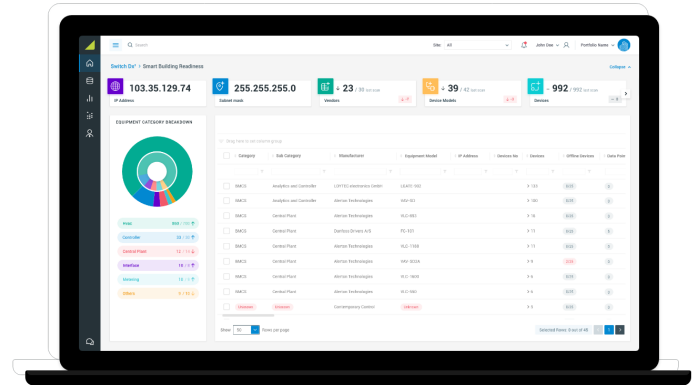
The Switch Dx<sup>3</sup> dashboard also identifies **which network ports are open** and in violation of your cybersecurity policies, plus the consistency of your device firmware versions.

# Get results right away

Here are the three easy steps to implementing Switch Dx<sup>3</sup>:

## 01 Project kick off

Provide your network configuration details and the Switch Dx<sup>3</sup> IoT appliance will then arrive preconfigured to your site. When it does, all your team has to do is plug it in and run a scan.



## 02 Scan your building network and devices

After your appliance is installed, your team will run a building network and device scan. During this phase, Switch Dx<sup>3</sup> audits your network to test device connectivity.

## 03 The Switch Dx<sup>3</sup> dashboard and next steps

The analytics displayed on the Switch Dx<sup>3</sup> dashboard report on the digital readiness of your site and connectivity of your systems and devices, helping to identify your building network's outstanding issues. Discover which devices are returning unusual results, your range of firmware types and any network vulnerabilities.

# IoT Appliance tech specs

For up to 5k data points per site, the Advantech UNO-420 gateway datasheet [is visible here](#).

For up to 20k data points per site, the Advantech UNO-2372G gateway datasheet [is visible here](#).



## Switch Dx<sup>3</sup> system requirements

Switch Dx<sup>3</sup> will run on most browsers - Google Chrome and Mozilla Firefox are recommended.

## About Switch

Switch Automation is a global technology company that helps property owners and facility managers reduce operating costs, improve energy efficiency and deliver exceptional occupant satisfaction. Our comprehensive smart building platform integrates with traditional building systems as well as Internet of Things (IoT) technologies to analyze, manage and control assets in real-time. We serve enterprise customers and partners in a variety of industries including financial services, retail, grocery, commercial real estate and more. Learn how Switch Automation creates technology to bring people and planet to the center of building operations at [www.switchautomation.com](http://www.switchautomation.com) or reach out to a Switch Engineer at [contact@switchautomation.com](mailto:contact@switchautomation.com).

